



Portfolio

Preservation in motion

PRODUCT PORTFOLIO



Mathys is committed to motion worldwide. Founded in 1946, the company has been active in medical technology since 1958 and focuses on the development, manufacture and distribution of joint replacement products. The company's services include implants for hip, knee, shoulder and sports orthopaedics, and synthetic bone graft substitute. Headquartered in Bettlach, Switzerland, Mathys has development and production sites in Switzerland and Germany, as well as subsidiaries in 11 countries, and has been part of the US-based company Enovis™ since 2021. Enovis is committed to measurably improving patient outcomes by developing specialised solutions to clinical problems.





HIP SEGMENT

RM Pressfit vitamys, ceramic head & optimys



Hip primary

Monobloc



RM Pressfit vitamys / hooded

Modular



aneXys Flex / aneXys Uno



seleXys PC



RM Pressfit



aneXys Cluster / aneXys Multi



seleXys ceramys
inlay



RM Classic cup



aneXys ceramys
inlay



aneXys vitamys inlay
hooded / flat

Hip primary

Dual mobility



DS Evolution
uncemented



DS Evolution
cemented



DS Evolution
Revision



DS Evolution
inlay

Bipolar/hemi



Bipolar stainless
steel



Hemi stainless
steel

Heads



ceramys



symarec



Stainless
steel



CoCrMo

Hip primary

UNCEMENTED



optimys



stellaris



CBC



CBC
Evolution



CBH



twinSys

CEMENTED



CCA



twinSys

Hip revision

Femoral



twinSys
Long



MRP Titan
Stem



ceramys Revision

Acetabular



RM Classic Revision cup



CCB



CCE



KNEE SEGMENT

balanSys BICONDYLAR & EMPOWR Knee System



Partial **knee**

Total **knee**

balanSys UNI



EMPOWR 3D/PS Knee



EMPOWR 3D KNEE

EMPOWR PS KNEE

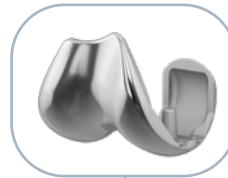
Total knee

balanSys BICONDYLAR

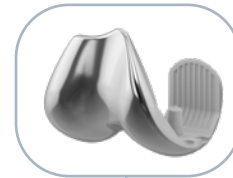
Total knee Femur *



Femur cem. *



Femur uncem.



PS Inlay



PE/vitamys

CR Inlay



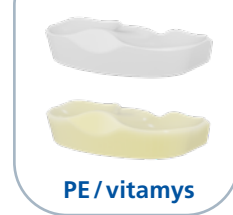
PE/vitamys

UC Inlay

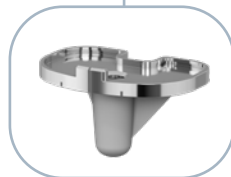


PE/vitamys

RP Inlay



PE/vitamys



Fixed Tibia *



RP Tibia

* available in TiNbN



Patella



3 Peg



3 Peg FLAT



REVISION **knee**

balanSys REV





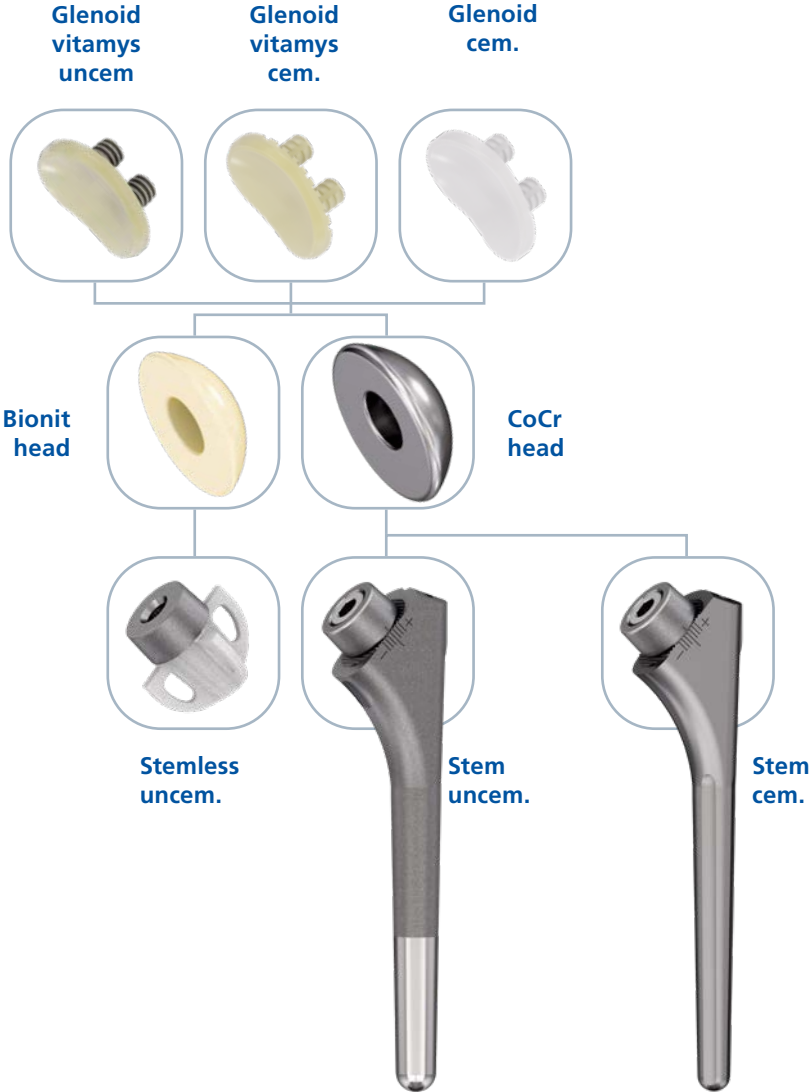
SHOULDER SEGMENT

Affins Short, Affinis Inverse & AltiVate Reverse



Anatomic shoulder

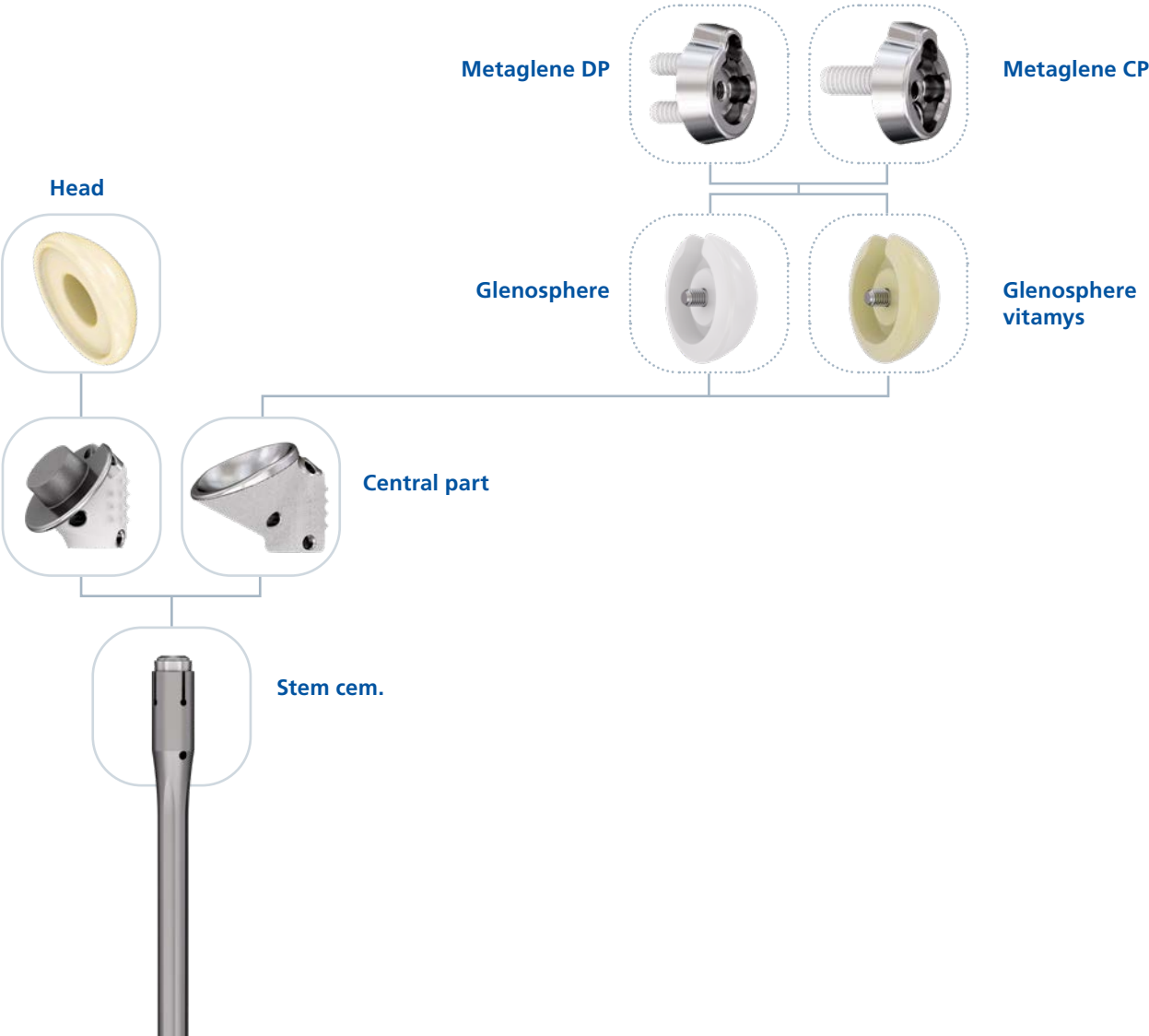
Affinis Short/Affinis Total



Shoulder Fracture / Fracture Reverse

Affinis Fracture/Fracture Inverse

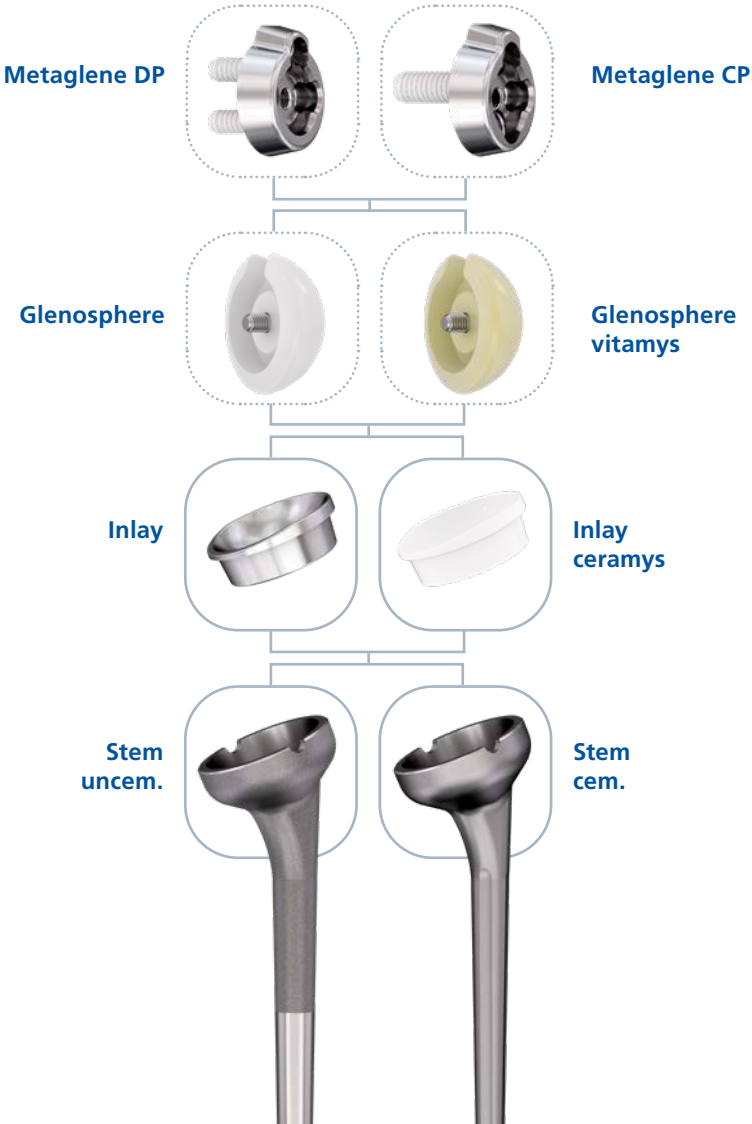
Affinis Inverse





Reverse shoulder

Affinis Inverse



AltiVate® Reverse





SPORTHOPAEDICS

Ligamys





BONE GRAFT SUBSTITUTES

Osteosynthesis & Orthopaedics



cyclOS Granules



cyclOS Preforms



cyclOS Putty

Building on our heritage

Moving technology forward

Step by step with our clinical partners

Towards a goal of preserving mobility

Preservation in motion







Mathys Ltd Bettlach

Robert Mathys Strasse 5 • 2544 Bettlach • P. O. Box • Switzerland

Tel. +41 32 644 1 644 • Fax +41 32 644 1 161

info@mathysmedical.com • www.mathysmedical.com